

Tomorrow's Buses for Today's Children



A Partnership to Reduce Pollution from
School Buses

Presentation Overview



- What is Clean School Bus USA?
- Results of Clean School Bus program
- Idling Reduction - new campaign

Clean School Bus USA:

Tomorrow's Buses for Today's Children

Background -

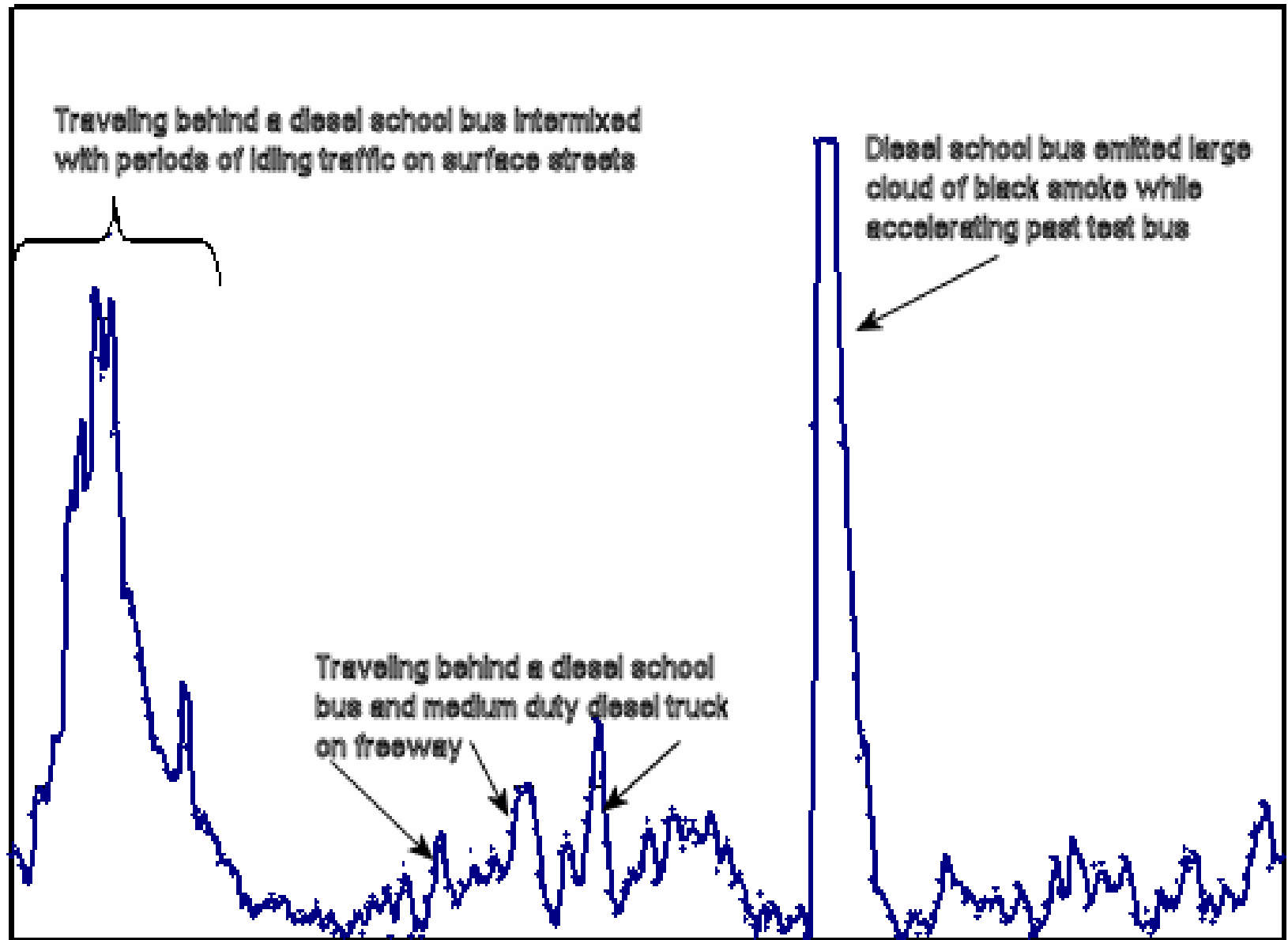
- EPA's *Clean School Bus USA* is a partnership of public and private sector leaders.
- Launched in April 2003 to provide cleanest possible transportation for this generation of school children by:
 - Reducing school bus idling & reinforcing smart driving practices
 - Retrofitting buses with modern pollution control technology
 - Replacing the oldest buses with new, cleaner buses
- The goal: modernize 100% of the fleet by 2010
- The benefits: healthier kids and communities.
 - Less air pollution
 - 1,000s of fewer cases of respiratory symptoms each year
 - Reduced asthma symptoms, medication, and missed school days



Why Focus on School Buses?

- School buses are very safe, but we can do better:
 - Many are very old
 - Rudimentary or no emission controls
 - Almost 400,000 are diesel-powered
- 25 million children in the U.S. ride school buses.
- Recent studies show that air inside bus can be more polluted than outside bus.
- EPA's 2004 & 2007 heavy-duty engine standards only apply to *new* engines.
 - Today's kindergartners will be in college before the school bus fleet turns over!

Representative Pollutant Measurements



Afternoon Run Schedule

National Clean School Bus Grants and Funding

- 2003
 - \$5 Million
 - 17 grants
- 2004
 - \$5 Million
 - 20 grants
- 2005
 - \$7.5 Million
 - 37 grants
- 2006
 - \$7 Million
 - Estimated 30-40 grants nationally

Region 3 Clean School Bus activity

- Grants in 2003
 - General McLane School District, PA
 - North Allegheny School District, PA
- Grants in 2004
 - Upper Darby, PA
- Grants in 2005
 - Chester County, PA
 - Great Valley, PA
 - Richmond, VA
- SEPs
 - Quite a bit of activity in Region 3

There are **25 million** reasons why
it's important to **reduce idling**



Take the pledge. . .
the key to reducing idling is you.

Turn the Key and Make a Difference!

- “The Key to a Healthier Ride” is a public information campaign that provides a forum for children to learn about air quality and diesel emissions.
- Launching pilot this spring, nationwide this summer.

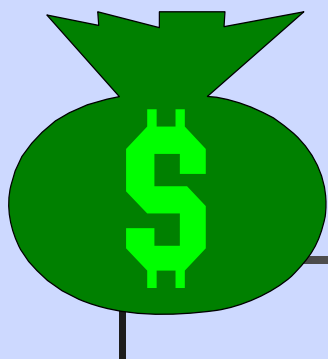


Idle Reduction is one of the easiest ways to save fuel, protect our kids and reduce emissions.

- Buses tend to idle near where kids congregate creating a situation where high exposures are possible.
- In addition to creating air pollution and contributing to health risks, idling buses are noisy and smelly.
- Reduced idling can save lots of money – buses consume at least a half gallon of fuel for each hour they idle.



$$\frac{0.5 \text{ gal}}{\text{hr}} \times \frac{0.5 \text{ hr}}{\text{day}} \times \frac{180 \text{ days}}{\text{yr}} \times 50 \text{ buses} \times \frac{\$1}{\text{gal}} = \$2,250 \text{ per year}$$

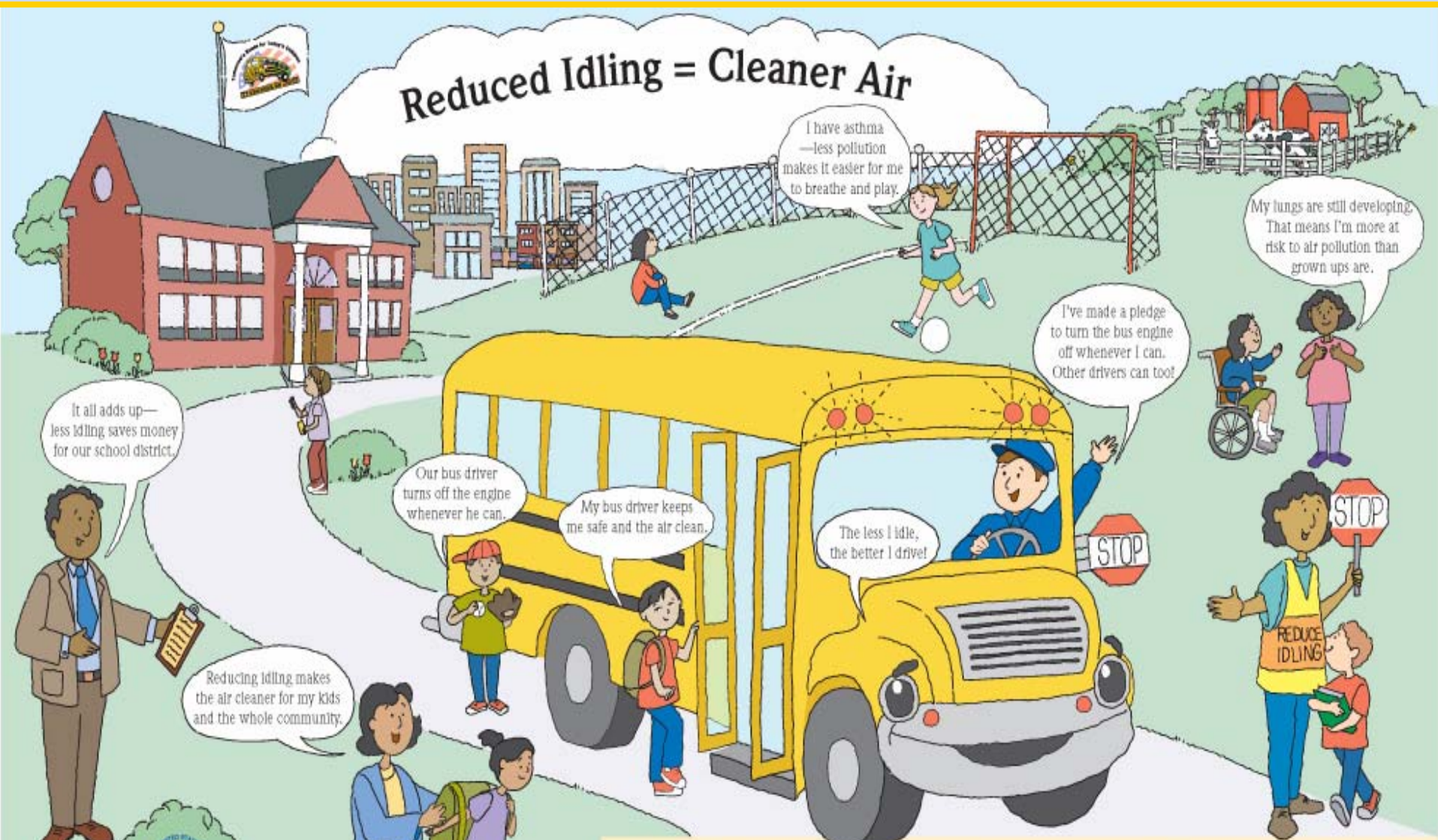


Reduced Idling = Reduced Fuel Costs

“We fully implemented our bus idling policy beginning with the 2004-05 school year. In 2004-05 we drove 3,716 more miles than 2003-04 however; we used 10,470 gallons less of diesel fuel.”

- Bill McCoy, Director of Operations,
Lincoln Public Schools, Lincoln, Nebraska

Reduced Idling = Cleaner Air



It all adds up—less idling saves money for our school district.

Our bus driver turns off the engine whenever he can.

My bus driver keeps me safe and the air clean.

I have asthma—less pollution makes it easier for me to breathe and play.

I've made a pledge to turn the bus engine off whenever I can. Other drivers can too!

My lungs are still developing. That means I'm more at risk to air pollution than grown ups are.

The less I idle, the better I drive!

Reducing idling makes the air cleaner for my kids and the whole community.

For more information, including how your bus driver can Take the Pledge, visit www.epa.gov/cleanschoolbus.

Clear School Bus Day is a public-private partnership led by the U.S. Environmental Protection Agency that works to reduce idling-related air pollution from school buses. The program encourages ways to reduce air pollution and improve air quality through idling reduction, engine maintenance, clean fuels, and bus replacement.

Your school bus idles when the engine is on but the bus isn't going anywhere. This usually happens when your bus driver is waiting to pick you up or drop you off for school.

When your school bus idles, it pollutes the air in and around the bus. By idling less, your bus can do its share for cleaner air!

Reducing idling can:

- Make the air cleaner in your community.
- Save money in wasted fuel.
- Reduce wear and tear on your school bus' engine.
- Help everyone breathe easier!

Here's what you can do...

- Talk to your teacher or principal about why it's important to reduce school bus idling.
- Help make "Reduce Idling" signs for your school's parking lot.
- Lead a pledge drive! Ask your bus driver to Take the Pledge to reduce idling!



Idle Reduction Pledge

I _____ pledge to:

1. Limit idling time in school bus loading and unloading areas.
2. Turn the engine off in the school whenever possible.
3. Learn more about implementing idle-reduction program idle-reduction programs and policies in my school district.

Signed: _____.

Date: _____.

School District: _____.

City and State: _____.

Take the Pledge!



It's as easy as 1, 2, 3...



-
- **For further information visit:**
www.epa.gov/cleanschoolbus